

# Towards a more equitable future: a case study of the opportunity index in South Africa

Gina Weir-Smith (PhD)

Human Sciences Research Council, Wits  
University

8 September 2021

Joint SSAG-SAAG Biennial Virtual Conference



science & innovation

Department:  
Science and Innovation  
REPUBLIC OF SOUTH AFRICA



# Presentation overview

- Background
  - Inequalities and poverty
  - Attempt to alternative socio-economic measures
- What is the Geography of Opportunity?
- Data and Methods
- Findings
- Recommendations

# Geography of Opportunity

- Developed in 1995, Galster & Killen
- Describes spatial dimensions of opportunities in a metropolitan area
- Multi-dimensional index
- Considers place-based opportunity structures
- More than a synonym for jobs
- Not tested in South Africa

# Data & Methods (1)

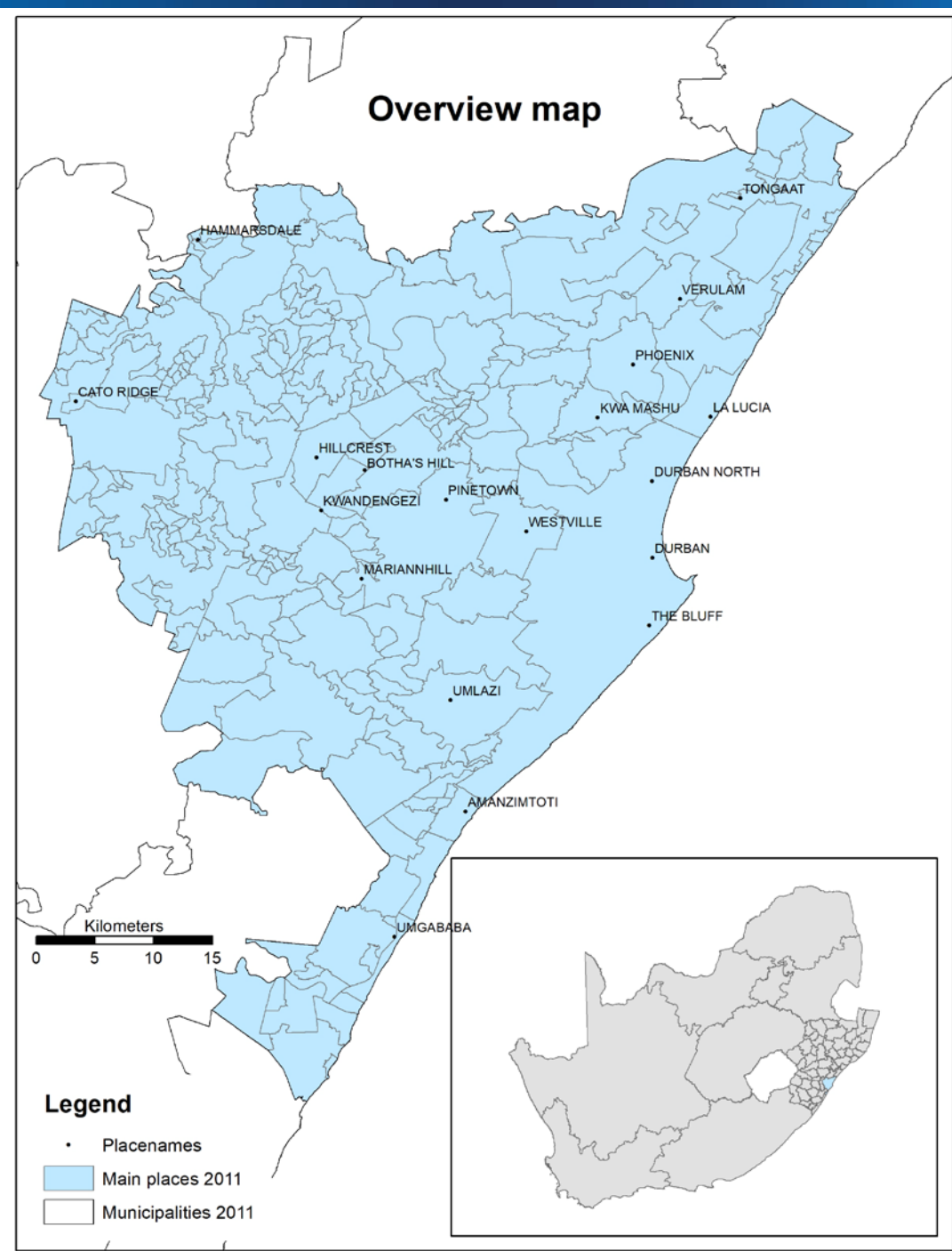
- Case study of eThekweni (Durban)
- Data intensive
  - Some indicators not easily available
- Normalise absolute values
  - Between 0-100
- Opportunity index is average of 3 domain scores
  - Higher values = greater opportunity

# Data & Methods (2)

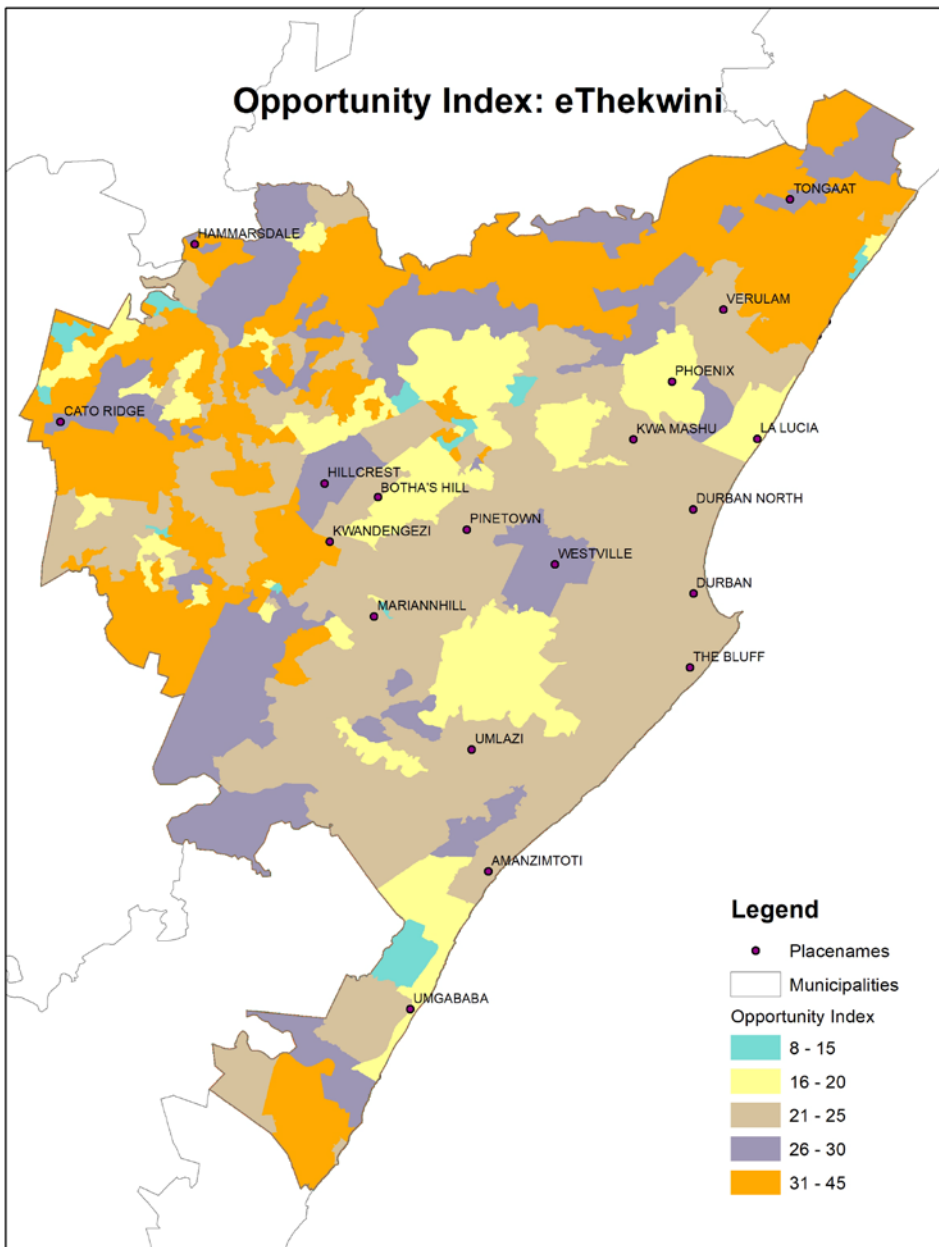
Domain	Indicator
Jobs & economy	Unemployment
	Poverty
	Median household income
Education	Pre-school enrollment
	High school dropout
	Post secondary attainment
Community	Youth inclusion
	Primary health facilities
	Supermarkets
<b>Opportunity Index</b>	

# Data & Methods (3)

- Spatial statistics
  - Local Moran's  $I$
  - Clusters and outliers
  - Inverse distance



# Findings (1)



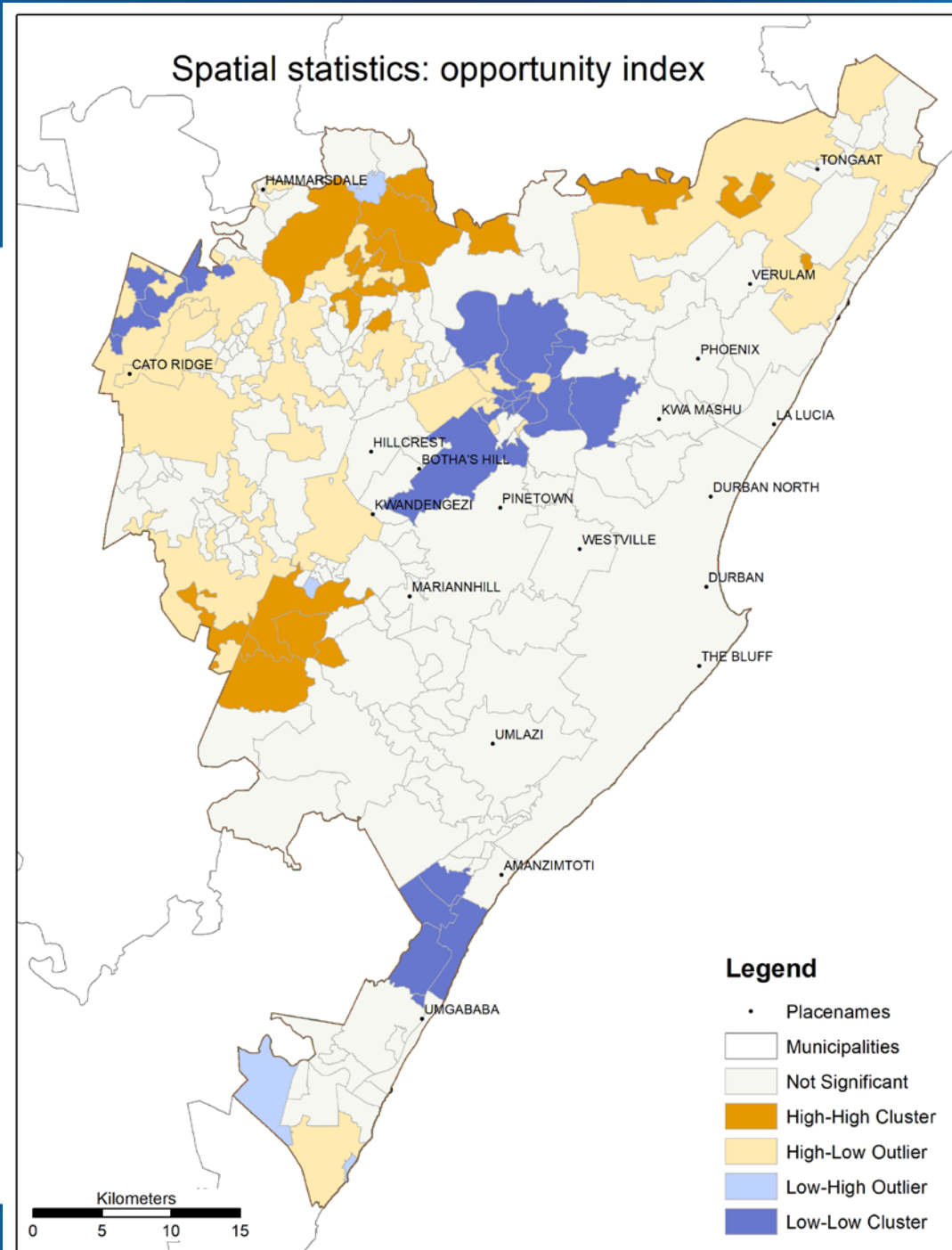
- Local geography is important
  - Terrain
- High opportunity on the periphery
  - Low population
  - Sometimes higher income
- Low opportunity in a few townships

# Findings (2)

- Clusters

- High (19)

- Northwest
- Central south
- Unemployment high, poverty low





# Findings (3)

- Clusters
  - Low (29)
    - Central north
    - Southern coast
    - Very low poverty
- Outliers (11)
  - Most Main places with high index
  - Northern part

# Recommendations

- The verdict is out
  - Opportunity index more positive
  - Little overlap with existing inequality measures
- Geo-targeted interventions
- Apply to other metros
  - Different geography and terrain
- Compare with other combined indices
- Consider additional indicators
  - Access to schools, public transport, fast food outlets, filling stations