

**A look at Sexual debut in South
Africa: Trends and current
determinants of age at sexual
debut among youth from three
National studies between 2005-
2012.**

Shandir Ramlagan & Musa Mabaso

Human Sciences Research Council

Introduction

- Youth start sex early resulting in risky sexual behaviour
 - leads to unplanned pregnancy, and
 - sexually transmitted infections including HIV.
- We investigate trends in age of sexual debut in South Africa (2005-2012)
 - 3 time points
- We also investigate the socio-demographic determinants of age at sexual debut among youth in 2012.

Methodology

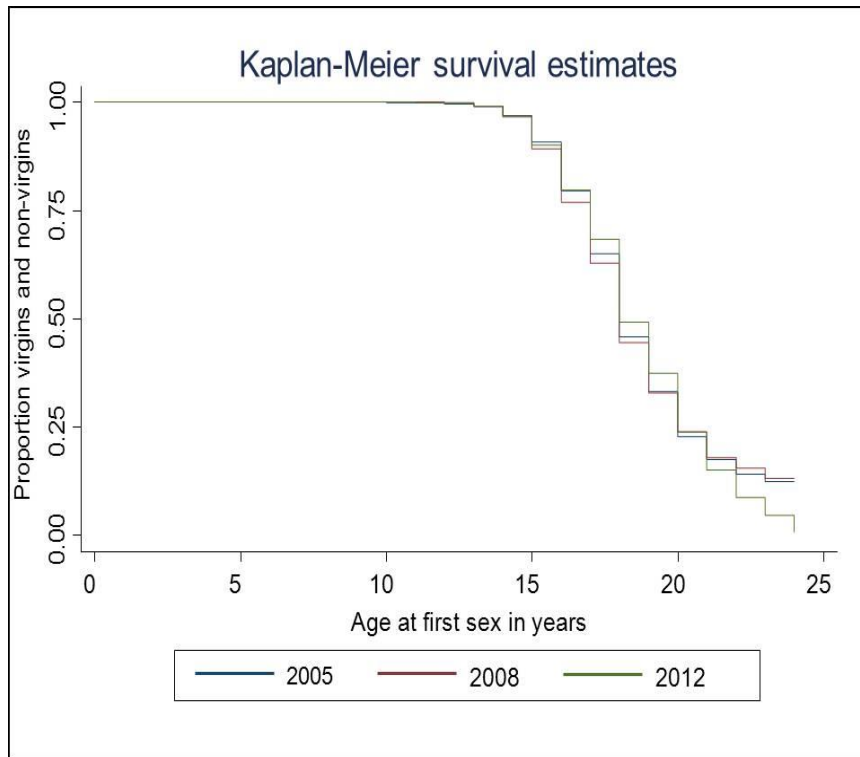
- SABSSM II, III, IV
- 3 national household based surveys in South Africa conducted in 2005, 2008 and 2012.
- This presentation focused on adolescents and young adults aged 15-24 years.
- Kaplan-Meier analysis was utilized to estimate the probability of sexual debut at a given age overtime.
- Cox proportional hazards regression model was used to examine determinants of time to sexual debut.

Results (1/5)

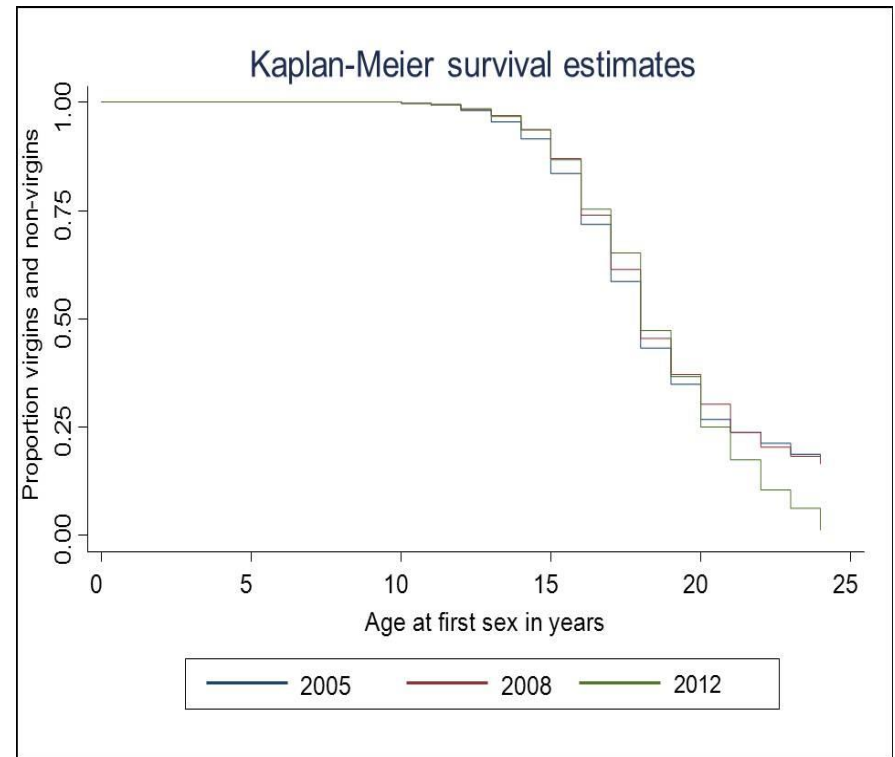
- In the 2012 survey a total of 8,221 respondents aged 15 to 24
- Overall 10.7 % had sex before the age of 15 years
 - 49.63% were females and 50.37% were males.
- Overall the median age at sexual debut was 18years for both males and females.
- Combined data, the Kaplan-Meier curves show that that there has been no change in the pattern of age at sexual debut across the three surveys.
- But...

Results (2/5)

Figure A. The Kaplan-Meier curves showing the pattern of age at sexual debut for **females** in 2005, 2008 and 2012.



- Figure B. The Kaplan-Meier curves showing the pattern of age at sexual debut for **males** in 2005, 2008 and 2012.



Results ^(3/5)

Variables	Median (IQR)	Crude HR	CI		p-value
Age in years					
15-19	20 (17-19)				
20-24	18 (16-20)	1.26	1.17	1.35	<0.001
Sex					
Female	18(17-20)	1			
Males	18(16-21)	1.07	1.00	1.14	0.044
Race					
Other	19(17-23)	1			
African	18(16-20)	1.56	1.46	1.68	<0.001

Results (4/5)

Variables	Median (IQR)	Crude HR	CI		p-value
Locality type					
Urban formal	18(17-21)	1			
Urban informal	17(16-19)	0.86	0.77	0.97	0.013
Rural formal	18(16-20)	1.29	1.12	1.48	<0.001
Rural informal	18(16-20)	1.02	0.90	1.15	0.736
Province					
Western Cape	18(16-20)	1			
Eastern Cape	18(16-20)	1.10	0.97	1.24	0.129
Northern Cape	18(17-20)	0.95	0.82	1.10	0.519
Free State	18(16-20)	1.06	0.91	1.22	0.455
KwaZulu-Natal	19(17-22)	0.72	0.64	0.80	<0.001
North West	18(16-19)	1.13	0.98	1.31	0.091
Gauteng	18(17-22)	0.84	0.74	0.96	0.009
Mpumalanga	18(16-20)	0.99	0.86	1.14	0.899
Limpopo	18(17-20)	0.88	0.77	1.02	0.082

Results (5/5)

Variables	Median (IQR)	Crude HR	CI		p-value
Attend school					
Yes	17(*)*	1.00			
No	17(16*)	2.39	2.03	2.81	<0.001
Mother alive					
Yes	17(*)*	1			
No	17(18)*	1.53	1.25	1.86	<0.001
Father alive					
Yes	17(*)*	1			
No	17(*)*	1.20	1.01	1.44	0.039
Orphan					
No	17(*)*	1			
Yes	16(*)*	1.37	1.16	1.61	<0.001
Orphanhood					
Not orphan	17(*)*	1			
Maternal	18(16*)	1.75	1.35	2.26	<0.001
Paternal	17(*)*	1.19	0.97	1.47	0.104
Double orphan	18(16*)	1.41	1.06	1.89	0.020
Main source of income					
Formal salary/earnings on which you pay	18(17-20)	1.00			
Contributions by adult family members	18(17-21)	1.00	0.85	1.17	0.955
Contributions by younger family members	18(16-19)	1.26	0.52	3.05	0.602
Government pensions/Grants	18(17-20)	1.09	0.91	1.30	0.348
Grants/Donations by welfare organization	18(16-19)	1.34	1.09	1.66	0.006
Other sources	18(16-19)	1.29	1.12	1.49	<0.001

Conclusion

- Overtime age at first sexual intercourse has not changed significantly in South Africa.
- Socio-economic/demographic factors remain the most important as determinants of sexual debut.
- Interventions targeted at delaying early sexual activity among the youth adults need to be reinforced.

Acknowledgements

- *This project has been supported by the President's Emergency Plan for AIDS Relief (PEPFAR) through the Centers for Disease Control and Prevention (CDC) under the terms of cooperative agreement Numbers U2GPS00570-04 and 1U2GGH000357-01.*
- *Its contents are solely the responsibility of the authors and do not necessarily represent the official views of CDC.*