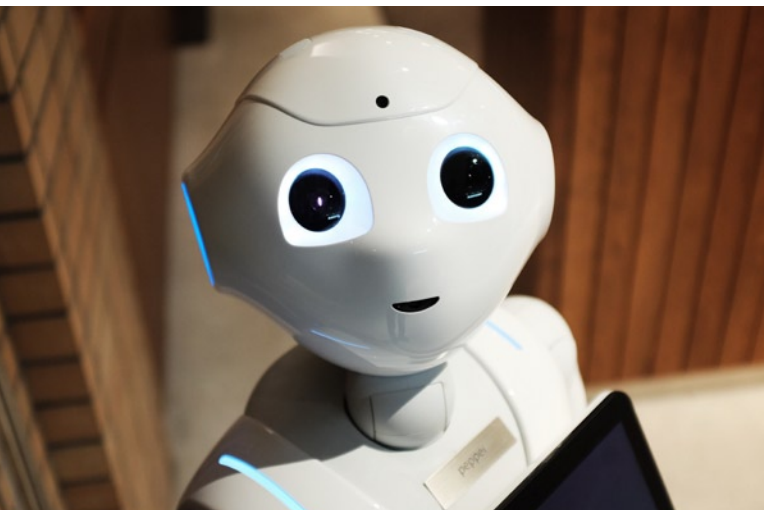




BUSINESS SECTOR R&D AT A GLANCE

Business enterprise expenditure on R&D (BERD) represents the component of gross expenditure on R&D (GERD) incurred by enterprises or units in the private sector. R&D performance by South Africa's formal business sector impacts economic growth, GDP, technology development and competitiveness. This fact sheet shows that BERD is decreasing year-on-year. In the last periods surveyed, R&D spend by business decreased from R14.448 billion in 2018/19 to R10.704 billion in 2019/20. The business sector devoted the largest share of its R&D expenditure to the natural sciences, technology, and engineering fields (98.6%). A higher proportion of business R&D spend was devoted to applied research as compared to basic and experimental research.



FACT SHEET NO. 35

THE BIG PICTURE



SOUTH AFRICA'S GDP FOR 2019/20 WAS **R 5 605.034 BILLION**

GROSS DOMESTIC EXPENDITURE ON R&D (GERD) IN 2019/20 WAS **R 34.485 BILLION**

THEREFORE **0.62%** OF GDP WAS SPENT ON R&D IN 2019/20

0.62%

BERD DECREASED FROM:

R 14.448 BILLION
IN 2018/19



R 10.704 BILLION
IN 2019/20

FOREIGN-FUNDED R&D BY THE BUSINESS SECTOR INCREASED FROM R 400 462 000 IN 2018/19 TO R 1.168 BILLION IN 2019/20, INDICATING FOREIGN BUSINESS CONFIDENCE IN SA'S PRIVATE SECTOR AS AN INVESTMENT OPTION



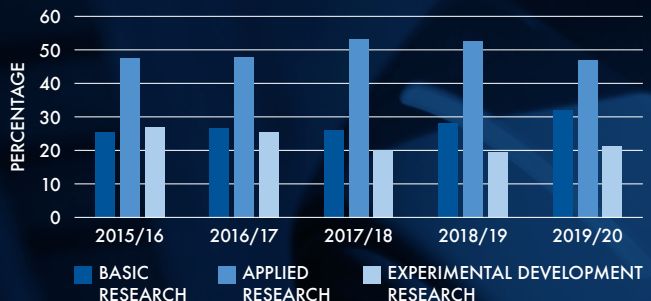
BUSINESS SECTOR-FUNDED R&D EXPENDITURE WAS **20%** FOR THE PERIOD 2019/20. THIS HAS BEEN THE **AVERAGE PERCENTAGE EXPENDITURE BY BUSINESS ON R&D OVER THE FIVE-YEAR PERIOD SINCE 2015/16**



GERD BY TYPE OF RESEARCH



APPLIED RESEARCH REMAINED THE HIGHEST R&D SPEND OVER THE FIVE-YEAR PERIOD SINCE 2015/16, WITH 46.6% SHARE OF R&D SPEND IN 2019/20

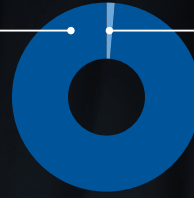


DIVISION OF RESEARCH FIELD



THE BUSINESS SECTOR DEVOTED THE **LARGEST SHARE** OF R&D EXPENDITURE TO THE **NATURAL SCIENCES, TECHNOLOGY, AND ENGINEERING FIELDS** WHICH WAS **98.6%**

NATURAL SCIENCES, TECHNOLOGY & ENGINEERING
98.6%

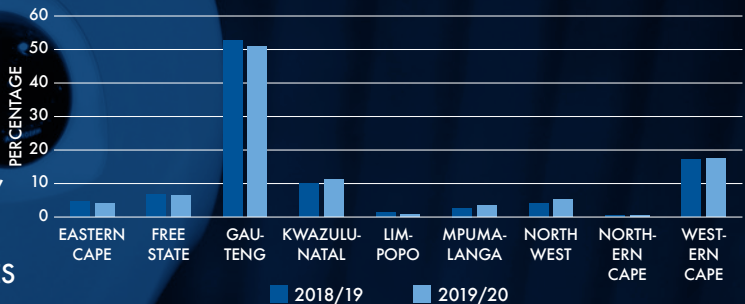


SOCIAL SCIENCES & HUMANITIES
1.4%

GEOGRAPHIC CONCENTRATION



BUSINESS SECTOR R&D IN 2019/20 WAS **CONCENTRATED** IN THE **GAUTENG, WESTERN CAPE, AND KWAZULU-NATAL PROVINCES**



R&D PERSONNEL



IN TERMS OF **OCCUPATION**, **RESEARCHERS** ARE REPRESENTED BY:



MALES
66.3%



FEMALES
33.7%

TECHNICIANS ARE MADE UP OF:



MALES
60.6%



FEMALES
39.4%

OTHER PERSONNEL DIRECTLY SUPPORTING R&D CONSISTS OF:



MALES
45.9%



FEMALES
54.1%

BUSINESS SECTOR R&D IN **HEADCOUNTS** BY **OCCUPATION**, AND **GENDER** 2019/20

OCCUPATION	TOTAL	MALE	FEMALE
RESEARCHERS	4 641	3 076	1 565
TECHNICIANS DIRECTLY SUPPORTING R&D	4 989	3 023	1 966
OTHER PERSONNEL DIRECTLY SUPPORTING R&D	3 118	1 432	1 686
TOTAL	12 748	7 531	5 217




BEHIND THE NUMBERS



The annual South African National Survey of Research and Experimental Development (R&D Survey) is conducted by the Centre for Science, Technology and Innovation Indicators (CeSTII) at the Human Sciences Research Council (HSRC), on behalf of the Department of Science and Innovation (DSI). R&D statistics are collected in terms of the Statistics Act No. 6 of 1999, and are quality assured by Statistics South Africa. Data collected through the Survey, and its historic data series, helps to inform decision-makers on investment planning, policy-making, advocacy, and research in South Africa. Data also adds to benchmarking and performance comparisons with our international counterparts.



Access previous survey reports:
<http://www.hsrc.ac.za/en/departments/CeSTii/reports-cestii>



Data and analysis for this publication was prepared by Viwe Sigenu, Theodore Sass, Sintu Mavi, and Anele Slater.



CONTACT US

Dr Glenda Kruss (Executive Head)	021 466 8086	gkruss@hsrc.ac.za
Dr Nazeem Mustapha (Project Leader)	021 466 7887	nmustapha@hsrc.ac.za
Dr Kgabo Ramoroka (Sector Lead)	021 466 8004	khramoroka@hsrc.ac.za

CONNECT WITH US

 ENGAGE WITH US ON TWITTER @HSRC_CeSTII FOLLOW US ON LINKEDIN SEE US ON INSTAGRAM FIND US ON FACEBOOK

Cover ventilator image credit: CSIR