

RESEARCH ARTICLE

# Population health impact, cost-effectiveness, and affordability of community-based HIV treatment and monitoring in South Africa: A health economics modelling study

Maitreyi Sahu<sup>1</sup> <sup>\*</sup>, Cara J. Bayer<sup>2</sup> , D. Allen Roberts<sup>3</sup> , Heidi van Rooyen<sup>4</sup>, Alastair van Heerden<sup>5,6</sup>, Maryam Shahmanesh<sup>7</sup>, Stephen Asiimwe<sup>8</sup>, Kombi Sausi<sup>4</sup>, Nsika Sithole<sup>7</sup>, Roger Ying<sup>9</sup> , Darcy W. Rao<sup>2,3</sup>, Meighan L. Krows<sup>10</sup> , Adrienne E. Shapiro<sup>2,10</sup>, Jared M. Baeten<sup>2,3,10,11</sup>, Connie Celum<sup>2,3,10</sup>, Paul Revill<sup>12</sup>, Ruanne V. Barnabas<sup>13,14</sup> 

**1** Department of Health Metrics Sciences, University of Washington, Seattle, WA, United States of America, **2** Department of Global Health, University of Washington, Seattle, WA, United States of America, **3** Department of Epidemiology, University of Washington, Seattle, WA, United States of America, **4** Human Sciences Research Council, Western Cape, South Africa, **5** SAMRC/WITS Developmental Pathways for Health Research Unit, Department of Paediatrics, School of Clinical Medicine, Faculty of Health Sciences, University of the Witwatersrand, Johannesburg, Gauteng, South Africa, **6** Center for Community Based Research, Human Sciences Research Council, KwaZulu-Natal, South Africa, **7** Africa Health Research Institute, KwaZulu-Natal, South Africa, **8** Integrated Community-Based Initiatives, Kabwohe, Uganda, **9** School of Medicine, Yale University, New Haven, CT, United States of America, **10** Division of Allergy and Infectious Diseases, Department of Medicine, University of Washington, Seattle, WA, United States of America, **11** Gilead Sciences, Foster City, CA, United States of America, **12** University of York, York, United Kingdom, **13** Division of Infectious Diseases, Massachusetts General Hospital, Boston, MA, United States of America, **14** Harvard Medical School, Boston, MA, United States of America

 These authors contributed equally to this work.

\* [msahu@uw.edu](mailto:msahu@uw.edu)

## Abstract

Community-based delivery and monitoring of antiretroviral therapy (ART) for HIV has the potential to increase viral suppression for individual- and population-level health benefits. However, the cost-effectiveness and budget impact are needed for public health policy. We used a mathematical model of HIV transmission in KwaZulu-Natal, South Africa, to estimate population prevalence, incidence, mortality, and disability-adjusted life-years (DALYs) from 2020 to 2060 for two scenarios: 1) standard clinic-based HIV care and 2) five-yearly home testing campaigns with community ART for people not reached by clinic-based care. We parameterised model scenarios using observed community-based ART efficacy. Using a health system perspective, we evaluated incremental cost-effectiveness and net health benefits using a threshold of \$750/DALY averted. In a sensitivity analysis, we varied the discount rate; time horizon; costs for clinic and community ART, hospitalisation, and testing; and the proportion of the population receiving community ART. Uncertainty ranges (URs) were estimated across 25 best-fitting parameter sets. By 2060, community ART following home testing averted 27.9% (UR: 24.3–31.5) of incident HIV infections, 27.8% (26.8–28.8) of HIV-related deaths, and 18.7% (17.9–19.7) of DALYs compared to standard of care. Adolescent girls and young women aged 15–24 years experienced the greatest reduction in incident HIV (30.7%, 27.1–34.7%). In the first five years (2020–2024), community ART required



## OPEN ACCESS

**Citation:** Sahu M, Bayer CJ, Roberts DA, van Rooyen H, van Heerden A, Shahmanesh M, et al. (2023) Population health impact, cost-effectiveness, and affordability of community-based HIV treatment and monitoring in South Africa: A health economics modelling study. *PLOS Glob Public Health* 3(9): e0000610. <https://doi.org/10.1371/journal.pgph.0000610>

**Editor:** Siyan Yi, National University of Singapore, SINGAPORE

**Received:** May 16, 2022

**Accepted:** June 6, 2023

**Published:** September 5, 2023

**Copyright:** © 2023 Sahu et al. This is an open access article distributed under the terms of the [Creative Commons Attribution License](https://creativecommons.org/licenses/by/4.0/), which permits unrestricted use, distribution, and reproduction in any medium, provided the original author and source are credited.

**Data Availability Statement:** The data model outputs used for this study are available at: [https://github.com/mita-sahu/DO\\_ART\\_CEA](https://github.com/mita-sahu/DO_ART_CEA).

**Funding:** The DO ART Study was funded by the Bill and Melinda Gates Foundation (OPP1134599) (RVB); the University of Washington and Fred Hutch Center for AIDS Research (P30 AI027757) (RVB), which is supported by the NIH; the Wellcome Trust (082384/Z/07/Z) (MS); the

University of Washington Royalty Research Fund (RVB); and the University of Washington King K Holmes Endowed Professorship in STDs and AIDS (RVB). Partial support for this research came from a Eunice Kennedy Shriver National Institute of Child Health and Human Development research infrastructure grant, P2CHD042828, to the Center for Studies in Demography & Ecology at the University of Washington. The funders had no role in study design, data collection and analysis, decision to publish, or preparation of the manuscript.

**Competing interests:** I have read the journal's policy and the authors of this manuscript have the following competing interests: Maitreyi Sahu acknowledges payments to institution and salary support from the Bill & Melinda Gates Foundation, Gates Ventures, and the Peterson Center on Health Care. Cara J. Bayer acknowledges payments to institution and salary support from the National Cancer Institute (U01 CA199334). She also acknowledges payments to the Center for Studies in Demography & Ecology at the University of Washington. This funding supports the Hyak supercomputing system at the University of Washington, which facilitated the work presented in the present manuscript. Finally, after initial design, preparation and submission of this manuscript, Cara worked as a part-time Graduate Research Assistant for Merck & Co., Inc from 05/07/2022 to 08/14/2022 on a topic different from that covered in this manuscript. D. Allen Roberts acknowledges that he was paid by the Bill & Melinda Gates Foundation as a Research Assistant through the University of Washington. He also acknowledges a grant from the National Institutes of Mental Health. Maryam Shahmanesh acknowledges grant support from Wellcome Trust, the Bill and Melinda Gates Foundation, the National Institutes of Health, and National Institute for Health and Care Research. Kombi Sausi acknowledges grant support from the Wellcome Trust, Bill and Melinda Gates Foundation, National Institutes of Health, and National Institute for Health and Care Research. Darcy W. Rao acknowledges a career development award and salary support from the National Center for Advancing Translational Sciences of the National Institutes of Health under Award Number KL2 TR002317. She also acknowledges payments to institution and salary support from the National Cancer Institute (U01 CA199334), as well as salary support for work unrelated to the present manuscript from NIH, USAID, and the World Health Organization. Dr. Rao acknowledges payments to the Center for Studies in Demography & Ecology at the University of Washington. This funding supports the Hyak

an additional \$44.9 million (35.8–50.1) annually, representing 14.3% (11.4–16.0) of the annual HIV budget. The cost per DALY averted was \$102 (85–117) for community ART compared with standard of care. Providing six-monthly refills instead of quarterly refills further increased cost-effectiveness to \$78.5 per DALY averted (62.9–92.8). Cost-effectiveness was robust to sensitivity analyses. In a high-prevalence setting, scale-up of decentralised ART dispensing and monitoring can provide large population health benefits and is cost-effective in preventing death and disability due to HIV.

## Introduction

Across sub-Saharan Africa, HIV remains a leading cause of death despite universal access to antiretroviral therapy (ART) [1], which substantially reduces HIV-related mortality and transmission and is provided at low cost or free to clients at government clinics [2, 3]. ART scale-up has fallen short of the 2020 UNAIDS' 90-90-90 target to end the AIDS epidemic, which comprises: 1) identifying 90% of persons with HIV through testing, 2) initiating 90% of people with HIV on ART, and 3) achieving viral suppression among 90% of people starting ART. As of 2021, progress towards global targets stands at 81%, 87%, and 90%, respectively [4]. Men are less likely than women to engage in clinic-based care due to barriers including long wait times, transport costs, and opportunity costs due to missed wages [5]. Untreated HIV and viremia among men is an important driver of the high HIV incidence among adolescent girls and young women, who account for almost one-third (30%) of new infections in eastern and southern Africa despite comprising only one-tenth of the population [4].

To overcome barriers to ART uptake and adherence, the World Health Organization recommends differentiated service delivery (DSD) models that adapt ART services to patient needs, such as flexible service locations, reduced frequency of refills, and task shifting [1]. Traditionally, these DSD models are recommended only for patients who are already virally suppressed. The recent Delivery Optimization of Antiretroviral Therapy (DO ART) Study evaluated community-based delivery of ART among people who are not already virally suppressed using mobile vans for initiation, monitoring, and resupply in South Africa and Uganda [6]. Community delivery increased viral suppression among men from 54% to 73%—eliminating the gender gap in viral suppression between men and women. The projected cost of community delivery of ART, when provided at scale, was comparable to estimates from clinic-based services. In the context of the COVID-19 pandemic, DSD models including community-based ART with multi-month dispensing were used widely to prevent treatment interruptions [7].

This study provides new estimates of population impact, affordability and cost-effectiveness of decentralised ART services when provided at scale and when extended to clients who are not already virally suppressed [8]. Most prior studies of DSD models have estimated either costs or outcomes, but not cost-effectiveness [9]. Two published studies evaluating cost-effectiveness of mobile ART services, which were both conducted several years ago, had mixed findings on cost-effectiveness, but both used higher annual per-patient costs than those for typical modern regimens from the universal test and treat era [10, 11]. The objective of this study was to leverage recent outcomes from the DO ART study to parameterise a mathematical model and project population health impact, budget impact, and cost-effectiveness of scaling up community delivery of ART in KwaZulu-Natal, South Africa. This study fills a key gap

supercomputing system at the University of Washington, which facilitated the work presented in the present manuscript. Dr. Rao is now employed as a Senior Program Officer starting October 2022. Contributions to the enclosed manuscript proceeded employment at the Foundation, and her current scope of work is not related to the content of the manuscript. Adrienne E. Shapiro acknowledges payments to institution from BMGF. She is also supported in part by grant NIH K23AI140918 from NIH NIAID. Dr. Shapiro also sits on a DSMB for the DATURA clinical trial of TB treatment for persons with HIV (Sponsor: ANRS). Jared M. Baeten is an employee of Gilead Sciences and acknowledges grant support from the Bill and Melinda Gates Foundation and payments to institution from the National Institutes of Health. Connie Celum reports funding from USAID and consulting for Gilead Sciences and Merck. Paul Revill acknowledges a consultancy from UNAIDS to review HIV national strategic plans and investment cases. Ruanne V. Barnabas acknowledges grants from BMGF, NIH, and Francis and Dorothea Reed Endowed Chair in Infectious Diseases. She also receives an honorarium for serving on a Gilead Sciences DSMB, and acknowledges that Regeneron covered the cost of conference abstract and manuscript writing.

in the health economics literature on DSD models and community-based ART in particular [12].

## Methods

### Study design, setting, and outcomes

The DO ART Study was a household-randomised trial conducted in South Africa and Uganda from 2016 to 2019 that evaluated community-based delivery of ART compared with clinic-based ART [6]. Briefly, eligible participants were identified through HIV testing at community locations or at home, with a subset referred from clinics, and included adults aged 18 or older living with HIV who were not already on ART or virally suppressed but were clinically stable. Community-based ART consisted of home or mobile van ART initiation with quarterly monitoring and ART refills via mobile vans. The clinic ART group received referral to clinic-based ART initiation and refills. For all groups, supervised lay counsellors conducted HIV testing and counselling and trained nurses provided ART services. Ethical approval was granted by the review committees at the Human Sciences Research Council in South Africa and the University of Washington.

This analysis uses results from the DO ART Study sites in KwaZulu-Natal, South Africa. In KwaZulu-Natal, HIV prevalence is high (27% among adults) [13], 86% of people know their status [13], and 54% of persons with HIV are virally suppressed [6]. The DO ART Study included 16 communities in the uMgungundlovu and Umkhanyakude Districts of the province of KwaZulu-Natal. In South Africa, trial results demonstrated that community ART increased viral suppression overall (adjusted risk ratio: 1.22, 95% CI: 1.09–1.36) and among men (1.39, 1.17–1.66), leading to overall achievement of the 90-90-90 target of 73% viral suppression among people living with HIV. Men achieved 72% viral suppression, compared with 51% for the standard of care. A costing analysis embedded in the trial found the estimated annual per-client cost of community ART, when provided at scale, was \$308–312 in the first year and \$244–246 in subsequent years, compared with previous estimates of \$249 per patient-year for the standard of care in South Africa, described further in [S1 Appendix Section VIII](#) [6, 14].

### Epidemiological model of population health impact

We parameterised an existing deterministic, compartmental model of HIV transmission and disease progression in KwaZulu-Natal with observed viral suppression data from the South African sites in the DO ART Study ([Table 1](#)). The DRIVE (Data-driven Recommendations for Interventions against Viral Infection) model projects the population-level impact of HIV interventions on HIV incidence, prevalence, and mortality. It represents the full KwaZulu-Natal population aged 15–79 years, stratified by age, gender, and ART status. Disease progression is based on CD4 count and viral load. The model captures historical ART rollout and assumes that virally suppressed persons have zero probability of transmitting HIV [15]. The model does not explicitly model ART adherence and discontinuation, but it represents the effect of ART among individuals who achieve viral suppression (we assume persons who initiate ART without viral suppression have no treatment benefit). In addition, we model reduced risk of HIV acquisition with voluntary male medical circumcision (VMMC) or condom use. Further model details are described in previous publications and in the [S1 Appendix Sections I–IV](#) [16, 17].

Where possible, model parameters were derived from local empirical data ([S1 Appendix Section II](#)). For other parameters, we used approximate Bayesian computation-sequential Monte Carlo (ABC-SMC) to identify parameter sets that best fit observed, historical

**Table 1. Modelled HIV testing and treatment intervention scenarios.**

	Scenario name	Scenario description	Gender	Persons with HIV who know status (%)	% of persons with HIV who know status who are on ART and virally suppressed	Distribution of people on ART (%) <sup>⊘</sup>		Population-level viral suppression among persons with HIV (%) <sup>⊚</sup>
						Clinic ART	Community ART	
1	Standard of Care	Clinic ART only	Women	88.9% [HRSC, [13]]	70% [DO ART, [6]]	100%	0%	62.2% (88.9% x 70%)
			Men	78% [HRSC, [13]]	51% [DO ART, [6]]	100%	0%	39.8% (78% x 51%)
2	Home Testing + Community ART	Home HIV testing and counselling campaign once every 5 years + Clinic ART + Community ART for people not reached by clinic care	Women	93% <sup>⊚</sup>	73% [DO ART, [6]]	91.8%*	8.2%*	68%* (93%* x 73%)
			Men	92% <sup>⊚</sup>	72% [DO ART, [6]]	68.2%*	31.8%*	66%* (92%* x 72%)

**Notes**

\*For Scenario 2, percentages are averages over 2020–2060; because the exact percentage of persons with HIV who know their status fluctuates over time, the distribution of people on ART and population-level viral suppression fluctuate accordingly.

<sup>⊚</sup>Calculated as baseline HIV testing coverage under Standard of Care, plus additional coverage achieved by home testing and counseling campaigns for persons with HIV not reached by baseline testing. See Table Q in [S1 Appendix](#) for calculations.

<sup>⊘</sup>See [S1 Appendix](#) Section V for calculations.

<sup>⊚</sup>Population viral suppression is calculated as: % of persons with HIV diagnosed times % on ART and virally suppressed.

<https://doi.org/10.1371/journal.pgph.0000610.t001>

population-level HIV prevalence ([S1 Appendix](#) Section III.a). Projections from the calibrated model are consistent with recent HIV prevalence and HIV incidence estimates, which were not used in calibration ([S1 Appendix](#) Section III.b). Model uncertainty was captured using the range of outcomes generated from the 25 best-fitting parameter sets (referred to as the uncertainty range [UR]), described further in [S1 Appendix](#) Section III.a.

**Model scenarios**

Model scenario assumptions are described in [Table 1](#). We modelled two main scenarios of programme implementation between 2020 and 2060:

1. Baseline HIV testing reflecting observed levels of HIV testing in KwaZulu-Natal, and HIV care for initiation, monitoring and refills provided at local ART clinics (“Standard of Care”)
2. Community-based home HIV testing and counselling (HTC) campaigns, conducted once every five years, followed by quarterly community-based ART delivery and monitoring for people who are not reached by the standard of care (“Home Testing + Community ART”)

We modelled viral suppression among persons with HIV on ART for each scenario; details are included in [Table 1](#) and [S1 Appendix](#) Section V. For Scenario 2, we assumed that 75% of adults aged 15–79 were reached by five-yearly home testing campaigns as observed in prior studies [18]. For both scenarios, we assumed that 2020 VMMC coverage levels continued through 2060.

In sensitivity analyses, we evaluated two additional scenarios: (1) to determine the impact of home testing alone, we modelled a scenario with home testing and clinic ART; and (2) we explored the impact of increased VMMC on study results ([S1 Appendix](#) Section VII).

**Cost and budget impact**

We estimated financial costs using a health system perspective. Costs were obtained from the DO ART Study and the literature and inflated to 2020 USD using a deflator series and exchange rates based on the IMF World Economic Outlook ([Table 2](#)) [19]. For clinic-based

care, we used published cost estimates from South Africa [14]. For community-based ART, we used cost projections from the DO ART Study under a scaled-up scenario [6]. We also included estimated hospitalisation costs, which varied by CD4 cell count category (Table 2). The cost of HIV testing campaigns was applied to the HIV-negative and undiagnosed HIV-positive population, assuming 75% coverage [18]. To assess affordability of the incremental programme cost of Home Testing + Community ART, we compared five-year annual incremental undiscounted programme costs to the reported annual programme costs for KwaZulu-Natal in South Africa's 2016–17 Consolidated Spending Report, in 2020 USD [20].

### Cost-effectiveness and net health benefits

We estimated cost-effectiveness using the incremental cost-effectiveness ratio (ICER), from the health system perspective. The primary outcome was the incremental cost per disability-adjusted life-year (DALY) averted, using a health system perspective. DALYs were calculated cumulatively as *the* sum of years of life lost and years of life lived with disability, assuming an average life expectancy of 80 years, health effects truncated at the end of the time horizon in 2060, and disability weights from the 2019 Global Burden of Disease (details in S1 Appendix Section X) [26]. To determine programme cost-effectiveness, we used a threshold of \$750 which is the ICER of interventions at the margin of inclusion of South Africa's HIV investment case [27]. For secondary outcomes, we estimated incremental cost per HIV infection averted and per HIV-associated death averted. To compare the health benefits of the intervention with health benefits foregone from not funding other health programmes, we estimated net health benefits (NHB), which is a measure that compares the health gains from committing scarce funding to the intervention to the health opportunity costs of foregone health gains due to the committed resources consequentially being unavailable to deliver other forms of health care. A positive net health benefit indicates that overall population health increases as a result of the programme [28]. We measured NHB at the population level using the following calculation, in which the cost-effectiveness threshold represents the ICER of foregone interventions:

$$\text{NHB} = \text{incremental DALYs averted} - (\text{incremental costs}/\text{cost-effectiveness threshold})$$

**Table 2. Costs used in the primary and sensitivity analyses.**

	Parameter	Value	Lower	Upper	Source (Main)	Source (Lower)	Source (Upper)
1	<b>Home testing for HIV</b>						
	Positive test	5.81	2	20.5	Meyer-Rath, 2019 [14]	OraQuick self-test [21]	Chang, 2016 (SEARCH) [22]
	Negative test	5.23	2	20.5			
2	<b>Annual HIV-related hospitalisation</b>						
	CD4 <200	125.50	71.50	222.5	Meyer-Rath, 2013 [23]	Meyer-Rath, 2013 [23]	Meyer-Rath, 2013 [23]
	CD4 200–350	58	39	97			
	CD4 350+	39	23	76			
On ART	45	23	80				
3	<b>Community ART</b>						
	First year	310.84	250	618.6	DO ART (at-scale) [6]	DO ART 6-month refill (calculated)	DO ART (as observed) [6]
	Subsequent years	245.15	199	500.88			
4	<b>Clinic ART</b>	249.15	109.55	315.39	Meyer-Rath, 2019 [14]	Nichols, 2021 (SDC6) [24]	Thomas, 2021 (PopART) [25]

#### Notes

In the analysis, all costs are inflation-adjusted to 2020 USD. Here they are presented in nominal USD for ease of reference with the literature.

<https://doi.org/10.1371/journal.pgph.0000610.t002>

We used a time horizon of 2060 and a cost-effectiveness threshold of \$750 as described above [27]. All costs and health outcomes were discounted 3% per year for the cost-effectiveness analysis. We also present undiscounted costs and health outcomes to aid in interpretability of total budget impact and program impact on lives saved and cases averted. The uncertainty from the mathematical model was carried through the health economic analysis by performing each calculation across all 25 best-fitting sets. Our reporting followed the guidelines set by the Consolidated Health Economic Evaluation Reporting Standards (CHEERS) [29].

### Sensitivity analysis

We conducted one-way deterministic sensitivity analyses varying the community-based ART costs, clinic ART costs, hospitalisation costs, testing costs, discount rate, and proportion of the population receiving community-based ART. A first two-way sensitivity analysis included the upper bound cost of community ART and lower bound for clinic ART (Table 2). Another two-way analysis included both community ART cost and the proportion of the population receiving community-based ART. We also conducted analyses using shorter time horizons of 2030 and 2045.

### Software

The mathematical model was implemented in Matlab Version 2020b. The health economic analysis used R version 4.0.2.

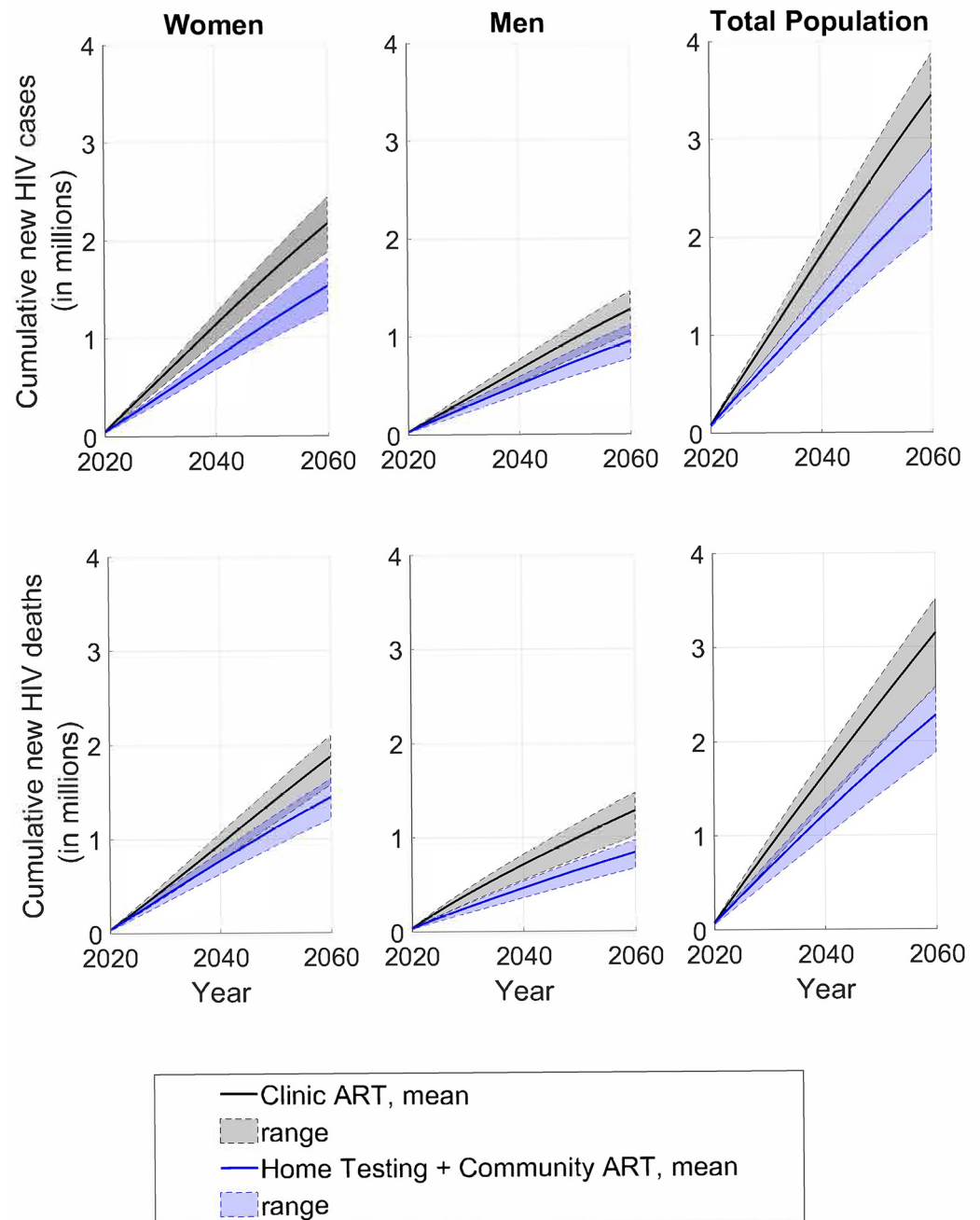
### Role of the funding source

The funder played no role in the study design, data collection, analysis, interpretation, or writing of the manuscript.

## Results

### Population health impact

Fig 1 shows the projected cumulative new HIV cases and HIV-associated deaths for the two scenarios, by gender. Five years after programme start, in 2025, Home Testing + Community ART was projected to avert 73,569 HIV-related deaths among men (32.5%, uncertainty range [UR]: 32.2–32.7) and 33,831 HIV-related deaths among women (13.3%, 13.1–13.6); and 32,359 cases among men (17.1%, 16.5–17.8) and 91,362 cases among women (28.0%, 26.6–28.6). By 2060, we estimated that Home Testing + Community ART averted a total of 441,643 HIV-related deaths among men (34.5%, 33.8–35.3) and 432,372 HIV-related deaths among women (23.1%, 22.0–24.3); 322,826 cases among men (25.4%, 22.2–29.0) and 634,982 cases among women (29.4%, 25.4–33.3). Home Testing + Community ART averted 17.5% (14.8–19.0) of DALYs among men and 14.7% (13.9–15.2) among women. In total, we estimated that Home Testing + Community ART averted 13.0 million DALYs compared with the Standard of Care scenario (18.7%, 17.9–19.7). The largest HIV incidence reduction occurred among adolescent girls and young women aged 15–24, among whom we estimated that Community ART averted 357,480 new cases of HIV (30.7%, 27.1–34.7) by 2060 (S1 Appendix Section VI). Among adolescent girls and young women aged 15–24, HIV incidence declined from an estimated 4.2% (2.7–4.9) in 2020 to 2.6% (1.8–3.4) under the Standard of Care and to 1.6% (0.9–2.1) under Home Testing + Community ART in 2060.



**Fig 1. Projected cumulative HIV cases and deaths over time by gender for Standard of Care compared to Home Testing + Community ART.** Notes: Uncertainty ranges represent the minimum and maximum for the 25 best fitting parameter sets.

<https://doi.org/10.1371/journal.pgph.0000610.g001>

### Budget impact

The undiscounted incremental annual programme cost for Home Testing + Community ART for KwaZulu-Natal compared with Standard of Care was estimated to be \$31.6 million (UR: 21.8–40.5) per year (Table 3). During the first five years of the programme (2020–2024),

**Table 3. Incremental costs, health outcomes, and cost-effectiveness ICER per infection for HTC + Community ART, compared with Standard of Care, by 2060 (in 2020 USD).**

	Home Testing + Community ART vs Standard of Care	Home Testing + Clinic Care only vs Standard of Care
<b>Cost and budget impact (undiscounted)</b>		
Incremental annual programme cost, 2020–2060	31.6 million (UR: 21.8–40.5)	19.5 million (UR: 16.7–22.2)
Incremental annual programme cost, 2020–2024	44.9 million (UR: 35.8–50.1)	20.6 million (UR: 17.13–22.59)
Initial investment required, 2020–2024	14.3% (UR: 11.4–16.0)	6.4% (UR: 5.3–7.1)
<b>Health gains (undiscounted)</b>		
HIV cases averted	957,808 (UR: 775,441–1,068,738)	241,950 (UR: 188,780–278,365)
HIV deaths averted	874,015 (UR: 703,693–965,636)	246,258 (UR: 192,549–275,694)
DALYs averted	13.0 million (UR: 10.5–14.5)	3.7 million (UR: 2.9–4.2)
<b>Cost-effectiveness (discounted 3% for both costs and health gains)</b>		
Cost per case averted	\$1570 (UR: 1206–1950)	\$3346 (UR: 2892–3838)
Cost per death averted	\$1748 (UR: 1451–2013)	\$3377 (UR: 3123–3730)
Cost per DALY averted	\$102 (UR: 85–117)	\$192 (UR: 181–211)

**Notes:**

Costs are presented in 2020 USD. Uncertainty ranges (URs) represent the minimum and maximum for model projections using the best-fitting parameter sets.

<https://doi.org/10.1371/journal.pgph.0000610.t003>

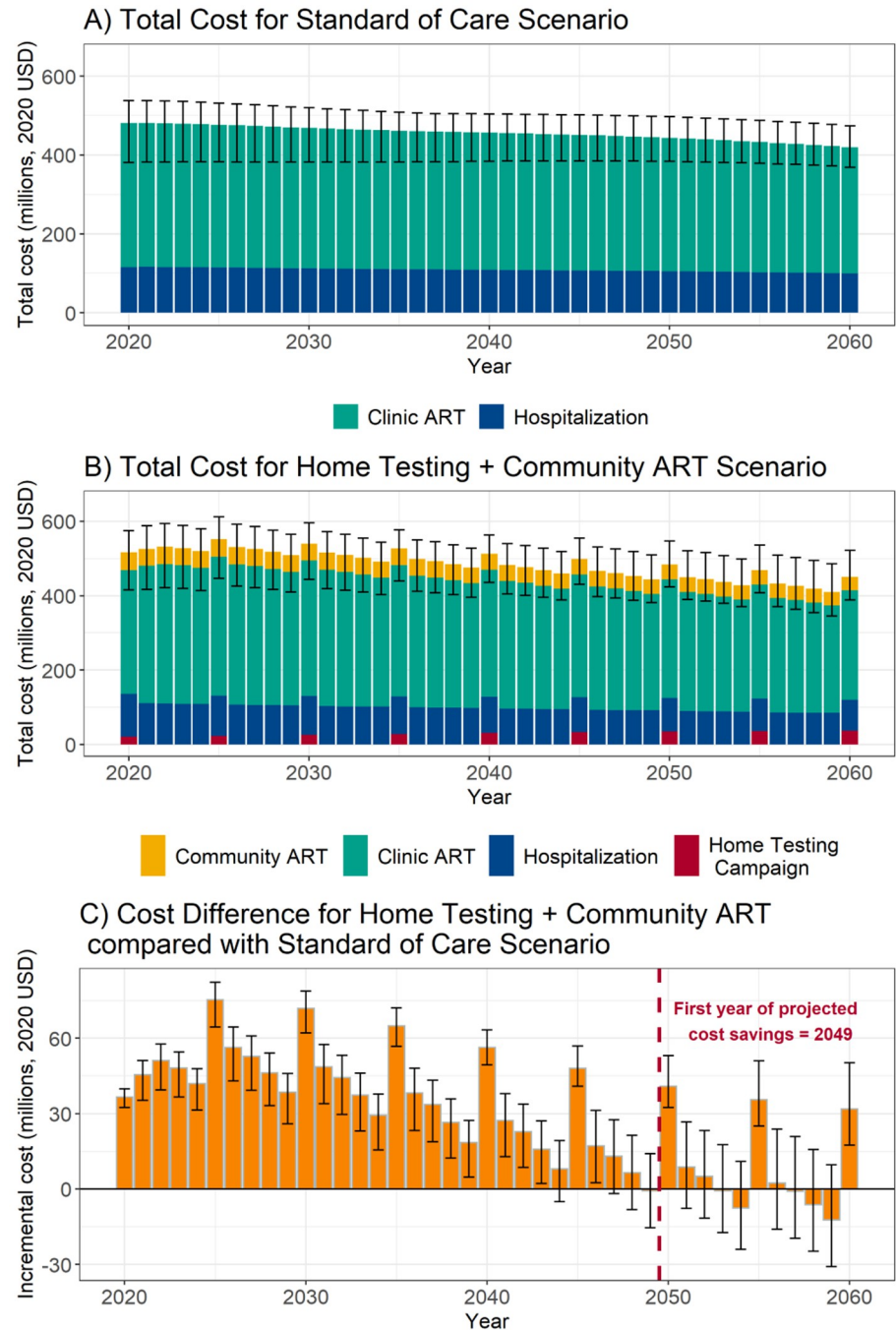
annual programme costs were \$44.9 million (35.8–50.1) higher than Standard of Care. When compared with the annual provincial budget for HIV programming, as reported by the Department of Health, of \$313.2 million per year, this incremental cost amounted to a 14.3% (11.4–16.0) additional initial investment. For both Standard of Care and Home Testing + Community ART, programme costs for ART delivery were projected to decline between 2020 and 2060 due to reduced prevalence; costs declined by 12.7% (0.6–25.1) for Home Testing + Community ART and 12.5% (-41.0 to 23.5) for Standard of Care (Fig 2). We project that the break-even year by which Home Testing + Community ART costs are lower than the Standard of Care is 2049; by this time, 56% of model projections estimated lower annual costs for Home Testing + Community ART compared with the Standard of Care.

### Cost-effectiveness and net health benefits

Compared with the Standard of Care, the estimated total incremental cost per DALY averted for Home Testing + Community ART was \$102 (UR: 85–117), below the threshold of \$750 per DALY averted (shown in Table 3 and Fig 3A). The estimated cost per case averted was \$1570 (UR: 1206–1950) and the cost per HIV-associated death averted was \$1748 (1451–2013). The net health benefit, measured in terms of DALYs and using a cost-effectiveness threshold of \$750, was positive within the first three years of implementation, indicating that the health gains accruing even within three years of implementing community ART would justify the additional costs of delivery (Fig 3B).

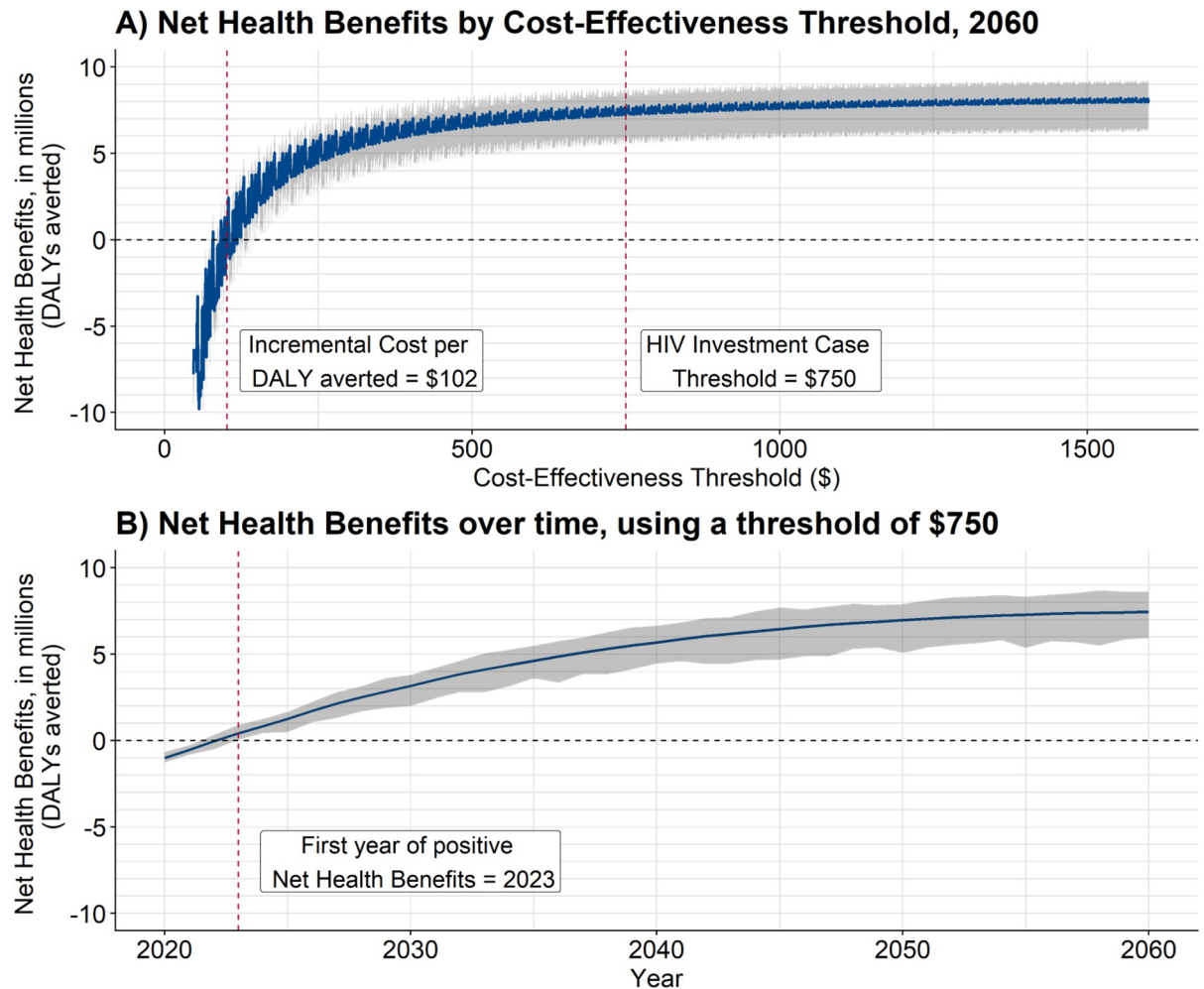
To separate the impact of Home Testing versus that of Community ART, we also considered a scenario with just Home Testing + Clinic ART. Table 3 shows that home testing alone averted a substantial number of HIV cases (241,950) and deaths (246,258), though these numbers amounted to less than a third of HIV cases and deaths averted by Home Testing + Community ART by 2060 (957,808 and 874,015, respectively).





**Fig 2. Total and incremental annual ART programme costs for Home Testing + Community ART versus Standard of Care for KwaZulu-Natal province, 2020–2060.** Notes: Costs are in 2020 USD, are undiscounted, and include ART and downstream hospitalisation costs but not upstream prevention and baseline testing costs. Uncertainty ranges represent the minimum and maximum for the best-fitting parameter sets. A) Total Cost for Standard of Care Scenario, B) Total Cost for Home Testing + Community ART Scenario, and C) Cost Difference for Home Testing + Community ART compared with Standard of Care Scenario.

<https://doi.org/10.1371/journal.pgph.0000610.g002>

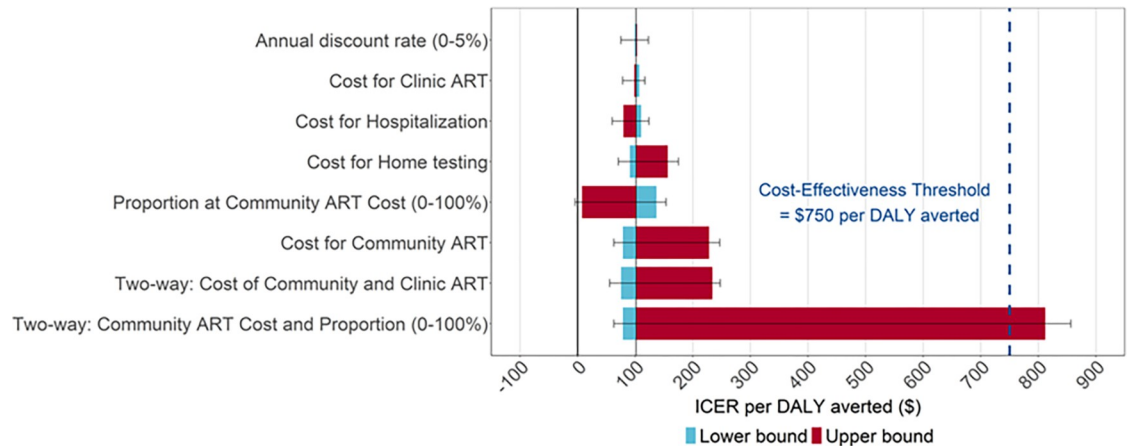


**Fig 3. Net health benefits (NHB) of Home Testing + Community ART compared to Standard of Care, by threshold.** Notes: The discounting rate for costs and health outcomes is 3%. Uncertainty ranges are the minimum and maximum values for the best-fitting model sets. A) Net Health Benefits by Cost-Effectiveness Threshold, 2060 and B) Net Health Benefits over time, using a threshold of \$ 750.

<https://doi.org/10.1371/journal.pgph.0000610.g003>

### Sensitivity analysis

Across all one-way sensitivity analyses, the incremental cost-effectiveness did not cross the threshold of \$750 per DALY averted (Fig 4). In the one-way sensitivity analysis of cost parameters, the largest driver of cost-effectiveness was the cost of community ART; using the upper bound for the cost of community ART led to an ICER of \$228.2 per DALY averted (UR: 207.6–247.0). Additionally, in a two-way sensitivity analysis using the upper bound cost for community ART and the lower bound cost for clinic ART, the cost per DALY averted was \$234.0 (221.1–247.7), below the threshold of \$750. In the baseline analysis, community-based ART was cost-effective up to an annual cost of \$1616, using a threshold of \$750. For the Home Testing + Community ART scenario, increasing the proportion of the population on community-based ART in Scenario 2 (to 100%) but achieving the same health gains led to much greater cost-effectiveness approaching cost saving because the price of community-based ART was cheaper than standard of care after the first year (ICER = \$7.9, –4.7 to 19.1). Reducing the time horizon also did not cause the ICER to cross the cost-effectiveness threshold: using a horizon through 2045 and 2030 yielded ICERs of \$171 (UR: 157–180) and \$400 (UR: 392–413),



**Fig 4. Sensitivity analysis for cost per disability-adjusted life-year (DALY) averted.** *Notes: Incremental cost-effectiveness ratios (ICERs) are presented in 2020 USD. Uncertainty ranges are the minimum and maximum values for best-fitting model sets. The “Two-way: Cost of Community and Clinic ART” sensitivity analysis uses the upper bound cost for Community ART and lower bound cost for Clinic ART and the “Two way: Community ART Cost and Proportion (0–100%)” sensitivity analysis uses the upper bound cost for Community ART applied to 100% of the population.*

<https://doi.org/10.1371/journal.pgph.0000610.g004>

respectively (S1 Appendix Section XI). A single two-way sensitivity analysis crossed the threshold of \$750 per DALY averted: when applying the cost of community-based ART in Scenario 2 to 100% of people on ART and also using the observed DO ART community-based ART costs, the ICER was \$812.0 (779.9–856.6); however, this analysis assumed no additional cost efficiencies from applying community-based ART to 100% of the population [Fig 4]. Incremental cost-effectiveness was not impacted when the level of VMMC scale-up was increased for both scenarios (S1 Appendix Section VII). In a sensitivity analysis which included the cost of six-monthly refills instead of quarterly refills (Table Z in S1 Appendix Section VIII), cost-effectiveness further increased to an ICER of \$78.5 (62.9–92.8) per DALY averted.

## Discussion

The results from this health economics modelling study provide evidence that community-based delivery of HIV care can cost-effectively be delivered to people not reached by the standard of care in a high-prevalence setting in southern Africa, with large gains in population health. Specifically, scale-up of Home Testing + Community ART requires an initial investment representing 14.3% of the current annual HIV budget and has potential to avert 28% of HIV-associated deaths, and 28% of HIV infections by 2060, resulting in an ICER of \$102 per DALY averted. In addition, within three years of programme implementation the health gains from this programme would justify the additional costs of delivery. Beyond the first few years of implementation and through 2060, adverse health outcomes (incidence, mortality, and DALYs) continue to decline substantially and ART costs decline because of the reduced secondary transmission. While efficiency of home testing may decrease over time if those unreached by prior efforts are harder to diagnose and link to care, the benefit of the Home Testing + Community ART scenario is driven by the impact of community-based ART. Additionally, our health economics results are robust across sensitivity analyses, and community-based ART with six-monthly (instead of quarterly) refills can even further increase cost-effectiveness to \$78.5 per DALY averted. The benefits of this strategy may be amplified during the COVID-19 pandemic since community-based care allows clients to avoid visiting clinics, decreasing exposure to respiratory illness.

Our modelling study finds remarkable effects on transmission to women. In particular, by 2060 we estimate a decrease of 31% in incident cases among adolescent girls and young women aged 15–24 years, who continue to experience the highest risk of HIV infection compared with other demographic groups [30]. These results are driven by impact of community-based ART on engaging men in care. The clinical results from the DO ART Study demonstrated community delivery of ART substantially increased viral suppression among men from 54% to 73% because men experienced gains from overcoming logistical barriers to facility-based care including lost wages, fixed operating hours, stigma, and gender norms [5, 6]. As a result, since virally suppressed men do not transmit HIV, our population modelling demonstrates that the greatest health impact of increased ART uptake among men occurs among adolescent girls and young women—a large driver of the overall cost-effectiveness. Community-based ART has potential to further slow the rate of new infections among adolescent girls and young women alongside ongoing HIV testing, treatment and VMMC programs [30].

Several recent trials and modelling studies have evaluated effectiveness and cost-effectiveness of community-based HIV testing and linkage to care. A prior modelling study suggested that home testing and counselling with linkage to care reduced incidence by 40.6% in ten years and the incremental cost-effectiveness was \$900 per quality-adjusted life-year (QALY) gained [16]. The recent PopART study found that three annual rounds of universal test and treat via home-based testing and counselling cost \$326 (266–391) per DALY averted, while 17 annual rounds from 2014 to 2030 cost \$625 (538–757) per DALY averted [25]. However, home testing does not guarantee uptake of ART—in a large cohort in South Africa, poor linkages to care persisted following home testing (54% were not verified as linked to care) [31]. Same-day community-based initiation of ART has shown promise in improving linkage to care at three months (69% versus 43%) and viral suppression at 12 months (50% versus 34%) [32]. The DO ART Study, which evaluated community-based ART initiation and resupply, found even further gains in viral suppression at 12 months for men (73% versus 54%). Thus, this study's findings that community-based initiation and resupply, when combined with home testing and counselling, leads to additional large gains in population health impact and cost-effectiveness beyond that of home testing alone, is in line with current literature and findings [33, 34].

This study adds to the evidence for extending DSD to key populations beyond clinically stable clients who already achieved viral suppression. WHO currently recommends various DSD models which are adapted to client needs to improve ART initiation and retention, but these recommendations are not well defined and are generally only provided for clinically stable patients [1]. Recent advocacy suggests that DSD models could achieve even greater outcomes if adapted based on the sub-population (e.g. men, women, adolescents, key populations), context (prevalence level, urban/rural, etc.), and clinical characteristics (co-morbidities, clinically unstable, clinically stable) [35]. We find that in a high-prevalence setting, community-based ART is a cost-effective strategy to engage virally unsuppressed men in care and in the long term can improve health outcomes for both men and women. We acknowledge that this research has limitations. First, there is considerable uncertainty in the values for sexual behavior and HIV natural history parameters used in the DRIVE model. We use a multiple-parameter Bayesian calibration approach and uncertainty ranges to illustrate the impact of different parameter combinations on future HIV trends. DRIVE also does not explicitly model ART discontinuation. However, we fit our model to empirical data on the proportion of people living with HIV with viral suppression, which represents effective ART coverage. Second, we do not evaluate the comparative cost-effectiveness of various DSD models such as community adherence groups and task shifting, or different forms of ART such as long-acting injectables. We also do not model key prevention interventions such as oral and injectable PrEP; however, since the outcome of interest is incremental cost-effectiveness between community- and

facility-based ART, scale-up of prevention does not change the health economics results. When we include VMMC in the model (S1 Appendix Section VII), the ICER for community-based ART remains exactly the same because scale-up is the same in both scenarios. Third, community-based ART costs are projected for a scaled-up programme and require client volume to be achievable. However, our results are robust to using the higher cost of community-based ART observed in the DO ART Study. Fourth, this study is limited to the province of Kwazulu-Natal in South Africa; while we expect the results to be generalisable to other high-prevalence settings in Southern Africa and to a lesser extent eastern Africa, the exact costs and impact may differ in each setting. In addition, results may differ in settings with lower HIV prevalence due to variation in client volume. Finally, we do not specifically model the impact of the COVID-19 pandemic, which could affect both outcomes and costs. Since the analysis is conducted over a long time horizon, we do not expect the pandemic to affect our interpretation.

South Africa has ongoing demonstration projects for community delivery of HIV care, which incorporates several components of DSD. This research supports continued implementation and evaluation of community-based options for ART initiation, monitoring, and resupply, including mobile vans and pickup points (such as smart lockers). These options can be offered at the time of HIV testing/ART initiation so that the service is client-centered. While we model community-based ART only for persons newly diagnosed through home testing campaigns or previously diagnosed but not reached by clinical care, ideally clients would have a choice regarding the mechanism for ART delivery and monitoring, potentially further increasing health gains. In this way, by leveraging existing high rates of HIV testing and expanding differentiated services to those with detectable viral load, we can increase linkage to care and viral suppression.

## Conclusion

This modelling analysis supports decentralised ART dispensing and monitoring as a public health approach with broad individual- and population-level benefits, including improved viral suppression among men and reduced transmission to adolescent girls and young women. Scale up of this program to people not reached by clinic care in high prevalence settings in Southern Africa can cost-effectively prevent death and disability due to HIV.

## Supporting information

**S1 Appendix. Supplementary appendix.**  
(PDF)

## Acknowledgments

The authors would like to thank the DO ART Study Team and the participants who participated in the trial. We also thank Adrienne Chew for scientific editing support, and Marina Antillon for technical guidance. This work was facilitated through the use of advanced computational, storage, and networking infrastructure provided by the Hyak supercomputer system at the University of Washington.

## Author Contributions

**Conceptualization:** Maitreyi Sahu, Cara J. Bayer, D. Allen Roberts, Paul Revill, Ruanne V. Barnabas.

**Formal analysis:** Maitreyi Sahu, Cara J. Bayer, D. Allen Roberts, Roger Ying, Darcy W. Rao, Paul Revill, Ruanne V. Barnabas.

**Funding acquisition:** Jared M. Baeten, Connie Celum, Ruanne V. Barnabas.

**Investigation:** Maitreyi Sahu, Cara J. Bayer, Heidi van Rooyen, Alastair van Heerden, Maryam Shahmanesh, Stephen Asiimwe, Kombi Sausi, Nsika Sithole, Jared M. Baeten, Connie Celum, Paul Revill, Ruanne V. Barnabas.

**Methodology:** Maitreyi Sahu, Cara J. Bayer, Ruanne V. Barnabas.

**Project administration:** Maitreyi Sahu, Heidi van Rooyen, Alastair van Heerden, Maryam Shahmanesh, Stephen Asiimwe, Kombi Sausi, Nsika Sithole, Meighan L. Krows.

**Supervision:** D. Allen Roberts, Heidi van Rooyen, Alastair van Heerden, Maryam Shahmanesh, Stephen Asiimwe, Kombi Sausi, Nsika Sithole, Paul Revill, Ruanne V. Barnabas.

**Validation:** Maitreyi Sahu, Cara J. Bayer.

**Visualization:** Maitreyi Sahu, Cara J. Bayer.

**Writing – original draft:** Maitreyi Sahu, Cara J. Bayer, Ruanne V. Barnabas.

**Writing – review & editing:** D. Allen Roberts, Heidi van Rooyen, Alastair van Heerden, Maryam Shahmanesh, Stephen Asiimwe, Kombi Sausi, Nsika Sithole, Roger Ying, Darcy W. Rao, Meighan L. Krows, Adrienne E. Shapiro, Jared M. Baeten, Connie Celum, Paul Revill, Ruanne V. Barnabas.

## References

1. World Health Organization. Consolidated guidelines on the use of antiretroviral drugs for treating and preventing HIV infection: recommendations for a public health approach. 2016. Available: [http://apps.who.int/iris/bitstream/10665/208825/1/9789241549684\\_eng.pdf](http://apps.who.int/iris/bitstream/10665/208825/1/9789241549684_eng.pdf)
2. Rodger AJ, Lodwick R, Schechter M, Deeks S, Amin J, Gilson R, et al. Mortality in well controlled HIV in the continuous antiretroviral therapy arms of the SMART and ESPRIT trials compared with the general population: AIDS. 2013; 27: 973–979. <https://doi.org/10.1097/QAD.0b013e32835cae9c> PMID: 23698063
3. Cohen MS, Chen YQ, McCauley M, Gamble T, Hosseinipour MC, Kumarasamy N, et al. Antiretroviral Therapy for the Prevention of HIV-1 Transmission. N Engl J Med. 2016; 375: 830–839. <https://doi.org/10.1056/NEJMoa1600693> PMID: 27424812
4. Joint United Nations Programme on HIV/AIDS. UNAIDS data 2021. Geneva; Available: [https://www.unaids.org/sites/default/files/media\\_asset/JC3032\\_AIDS\\_Data\\_book\\_2021\\_En.pdf](https://www.unaids.org/sites/default/files/media_asset/JC3032_AIDS_Data_book_2021_En.pdf)
5. Mills EJ, Beyrer C, Birungi J, Dybul MR. Engaging Men in Prevention and Care for HIV/AIDS in Africa. PLoS Med. 2012; 9: e1001167. <https://doi.org/10.1371/journal.pmed.1001167> PMID: 22346735
6. Barnabas RV, Szpiro AA, van Rooyen H, Asiimwe S, Pillay D, Ware NC, et al. Community-based antiretroviral therapy versus standard clinic-based services for HIV in South Africa and Uganda (DO ART): a randomised trial. The Lancet Global Health. 2020; 8: e1305–e1315. [https://doi.org/10.1016/S2214-109X\(20\)30313-2](https://doi.org/10.1016/S2214-109X(20)30313-2) PMID: 32971053
7. Grimsrud A, Wilkinson L. Acceleration of differentiated service delivery for HIV treatment in sub-Saharan Africa during COVID-19. J Int AIDS Soc. 2021;24. <https://doi.org/10.1002/jia2.25704> PMID: 34105884
8. Mdege ND, Chindove S. Bringing antiretroviral therapy (ART) closer to the end-user through mobile clinics and home-based ART: systematic review shows more evidence on the effectiveness and cost effectiveness is needed. Int J Health Plann Mgmt. 2014; 29: e31–e47. <https://doi.org/10.1002/hpm.2185> PMID: 23606314
9. Roberts DA, Tan N, Limaye N, Irungu E, Barnabas RV. Cost of Differentiated HIV Antiretroviral Therapy Delivery Strategies in Sub-Saharan Africa: A Systematic Review. J Acquir Immune Defic Syndr. 2019; 82: 9.

10. Babigumira JB, Sethi AK, Smyth KA, Singer ME. Cost Effectiveness of Facility-Based Care, Home-Based Care and Mobile Clinics for Provision of Antiretroviral Therapy in Uganda: *PharmacoEconomics*. 2009; 27: 963–973. <https://doi.org/10.2165/11318230-000000000-00000> PMID: 19888795
11. Miyano S, Syakantu G, Komada K, Endo H, Sugishita T. Cost-effectiveness analysis of the national decentralization policy of antiretroviral treatment programme in Zambia. *Cost Eff Resour Alloc*. 2017; 15: 4. <https://doi.org/10.1186/s12962-017-0065-8> PMID: 28413361
12. Chimatira R, Ross A. A rapid review and synthesis of the effectiveness of programmes initiating community-based antiretroviral therapy in sub-Saharan Africa. *Southern African Journal of HIV Medicine*. 2020;21. <https://doi.org/10.4102/sajhivmed.v21i1.1153> PMID: 33240539
13. Human Sciences Research Council (HSRC). *The Fifth South African National HIV Prevalence, Incidence, Behavior and Communication Survey, 2017 (SABSSM V)*. Cape Town: HSRC Press; 2018.
14. Meyer-Rath G, van Rensburg C, Chiu C, Leuner R, Jamieson L, Cohen S. The per-patient costs of HIV services in South Africa: Systematic review and application in the South African HIV Investment Case. McCreech N, editor. *PLoS ONE*. 2019; 14: e0210497. <https://doi.org/10.1371/journal.pone.0210497> PMID: 30807573
15. Meyer-Rath G, Johnson LF, Pillay Y, Blecher M, Brennan AT, Long L, et al. Changing the South African national antiretroviral therapy guidelines: The role of cost modelling. Lima VD, editor. *PLOS ONE*. 2017; 12: e0186557. <https://doi.org/10.1371/journal.pone.0186557> PMID: 29084275
16. Ying R, Sharma M, Celum C, Baeten JM, van Rooyen H, Hughes JP, et al. Home testing and counseling to reduce HIV incidence in a generalised epidemic setting: a mathematical modelling analysis. *The Lancet HIV*. 2016; 3: e275–e282. [https://doi.org/10.1016/S2352-3018\(16\)30009-1](https://doi.org/10.1016/S2352-3018(16)30009-1) PMID: 27240790
17. Rao DW, Bayer CJ, Liu G, Chikandiwa A, Sharma M, Tan N, et al. Cervical Cancer Elimination with Single-Visit Screening and Treatment Strategies in South Africa: Modeled Estimates in the Context of High HIV Prevalence. Available: [https://papers.ssrn.com/sol3/papers.cfm?abstract\\_id=3949428](https://papers.ssrn.com/sol3/papers.cfm?abstract_id=3949428)
18. Sharma M, Ying R, Tarr G, Barnabas R. Systematic review and meta-analysis of community and facility-based HIV testing to address linkage to care gaps in sub-Saharan Africa. *Nature*. 2015; 528: S77–S85. <https://doi.org/10.1038/nature16044> PMID: 26633769
19. International Monetary Fund. *World Economic Outlook*. 2015 [cited 17 Feb 2017]. Available: <http://www.imf.org/external/pubs/ft/weo/2015/01/weodata/index.aspx>
20. Guthrie T, Chaitkin M, Khoza N, Zulu NM, Madisha V, Ndlovu N, et al. Consolidated Spending on HIV and TB in South Africa (2014/15–2016/17). Pretoria: National Department of Health; Washington, DC: Health Finance & Governance Project, Results for Development Institute; 2018 p. 146. Available: [https://r4d.org/wp-content/uploads/South-Africa-HIV-and-TB-Expenditure-Review-2014-15-2016-17-Full-Report\\_vf.pdf](https://r4d.org/wp-content/uploads/South-Africa-HIV-and-TB-Expenditure-Review-2014-15-2016-17-Full-Report_vf.pdf)
21. Shapiro AE, Heerden A, Krows M, Sausi K, Sithole N, Schaafsma TT, et al. An implementation study of oral and blood-based HIV self-testing and linkage to care among men in rural and peri-urban KwaZulu-Natal, South Africa. *J Intern AIDS Soc*. 2020;23. <https://doi.org/10.1002/jia2.25514> PMID: 32589337
22. Chang W, Chamie G, Mwai D, Clark TD, Thirumurthy H, Charlebois ED, et al. Implementation and Operational Research: Cost and Efficiency of a Hybrid Mobile Multidisease Testing Approach With High HIV Testing Coverage in East Africa. *JAIDS Journal of Acquired Immune Deficiency Syndromes*. 2016; 73: e39–e45. <https://doi.org/10.1097/QAI.0000000000001141> PMID: 27741031
23. Meyer-Rath G, Brennan AT, Fox MP, Modisenyane T, Tshabangu N, Mohapi L, et al. Rates and Cost of Hospitalization Before and After Initiation of Antiretroviral Therapy in Urban and Rural Settings in South Africa: *JAIDS Journal of Acquired Immune Deficiency Syndromes*. 2013; 62: 322–328. <https://doi.org/10.1097/QAI.0b013e31827e8785> PMID: 23187948
24. Nichols BE, Cele R, Jamieson L, Long LC, Siwale Z, Banda P, et al. Community-based delivery of HIV treatment in Zambia: costs and outcomes. *AIDS*. 2021; 35: 299–306. <https://doi.org/10.1097/QAD.0000000000002737> PMID: 33170578
25. Thomas R, Probert WJM, Sauter R, Mwenge L, Singh S, Kanema S, et al. Cost and cost-effectiveness of a universal HIV testing and treatment intervention in Zambia and South Africa: evidence and projections from the HPTN 071 (PopART) trial. *The Lancet Global Health*. 2021; 9: e668–e680. [https://doi.org/10.1016/S2214-109X\(21\)00034-6](https://doi.org/10.1016/S2214-109X(21)00034-6) PMID: 33721566
26. Global Burden of Disease Collaborative Network. *Global Burden of Disease Study 2019 (GBD 2019) Disability Weights*. Seattle, WA: Institute for Health Metrics and Evaluation (IHME); 2020. Available: <http://ghdx.healthdata.org/record/ihme-data/gbd-2019-disability-weights>
27. Meyer-Rath G, van Rensburg C, Larson B, Jamieson L, Rosen S. Revealed willingness-to-pay versus standard cost-effectiveness thresholds: Evidence from the South African HIV Investment Case. Law M, editor. *PLoS ONE*. 2017; 12: e0186496. <https://doi.org/10.1371/journal.pone.0186496> PMID: 29073167

28. Drummond M, Sculpher M, Torrance G, O'Brien B, Stoddart G. *Methods for the economic evaluation of health care programmes*. 3 ed. Oxford, United Kingdom: Oxford University Press; 2005.
29. Husereau D, Drummond M, de Bekker-Grob E, Briggs A, Carswell C, Caulley L, et al. Consolidated Health Economic Evaluation Reporting Standards 2022 (CHEERS 2022) Statement: Updated Reporting Guidance for Health Economic Evaluations. Available: <https://www.equator-network.org/reporting-guidelines/cheers/>
30. Birdthistle I, Kwaro D, Shahmanesh M, Baisley K, Khagayi S, Chimbindi N, et al. Evaluating the impact of DREAMS on HIV incidence among adolescent girls and young women: A population-based cohort study in Kenya and South Africa. Newell M-L, editor. *PLoS Med*. 2021; 18: e1003837. <https://doi.org/10.1371/journal.pmed.1003837> PMID: 34695112
31. Dorward J, Mabuto T, Charalambous S, Fielding KL, Hoffmann CJ. Factors Associated With Poor Linkage to HIV Care in South Africa: Secondary Analysis of Data From the Thol'impilo Trial. *J Acquir Immune Defic Syndr*. 2017; 76: 8. <https://doi.org/10.1097/QAI.0000000000001550> PMID: 28961678
32. Labhardt ND, Ringera I, Lejone TI, Klimkait T, Muhairwe J, Amstutz A, et al. Effect of Offering Same-Day ART vs Usual Health Facility Referral During Home-Based HIV Testing on Linkage to Care and Viral Suppression Among Adults With HIV in Lesotho: The CASCADE Randomized Clinical Trial. *JAMA*. 2018; 319: 1103. <https://doi.org/10.1001/jama.2018.1818> PMID: 29509839
33. Hoffman R, Bardon A, Rosen S, Fox M, Kalua T, Xulu T, et al. Varying intervals of antiretroviral medication dispensing to improve outcomes for HIV patients (The INTERVAL Study): study protocol for a randomized controlled trial. *Trials*. 2017; 18: 476. <https://doi.org/10.1186/s13063-017-2177-z> PMID: 29029644
34. Fatti G, Ngorima-Mabhena N, Chirwa F, Chirwa B, Takarinda K, Tafuma TA, et al. The effectiveness and cost-effectiveness of 3- vs. 6-monthly dispensing of antiretroviral treatment (ART) for stable HIV patients in community ART-refill groups in Zimbabwe: study protocol for a pragmatic, cluster-randomized trial. *Trials*. 2018; 19: 79. <https://doi.org/10.1186/s13063-018-2469-y> PMID: 29378662
35. Grimsrud A, Bygrave H, Doherty M, Ehrenkranz P, Ellman T, Ferris R, et al. Reimagining HIV service delivery: the role of differentiated care from prevention to suppression. *Journal of the International AIDS Society*. 2016; 19: 21484. <https://doi.org/10.7448/IAS.19.1.21484> PMID: 27914186